

FABRAL[®]
METAL WALL AND ROOF SYSTEMS

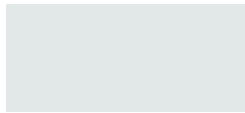
DIVISION 7

STANDARD STOCKED
ARCHITECTURAL COLORS

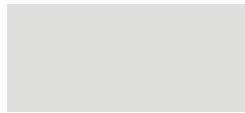


Core Colors

PVDF - 70% polyvinylidene flouride resin paint system



Regal White[□]
SR: .68 IE: .86 SRI: 82



Bone White[□]
SR: .72 IE: .84 SRI: 87



Almond[△]
SR: .63 IE: .86 SRI: 75



Sandstone[△]
SR: .54 IE: .86 SRI: 63



Surrey Beige[△]
SR: .40 IE: .86 SRI: 43



Sierra Tan
SR: .35 IE: .86 SRI: 37



Medium Bronze
SR: .30 IE: .87 SRI: 31



Mansard Brown
SR: .29 IE: .86 SRI: 29



Dark Bronze
SR: .26 IE: .84 SRI: 24



Extra Dark Bronze*
SR: .05 IE: .89 SRI: N/A



Patina Green
SR: .29 IE: .87 SRI: 29



Hemlock Green
SR: .28 IE: .87 SRI: 28



Classic Green
SR: .26 IE: .84 SRI: 24



Hartford Green*
SR: .10 IE: .82 SRI: 2



Teal
SR: .28 IE: .87 SRI: 28



Slate Blue
SR: .26 IE: .85 SRI: 24



Regal Blue
SR: .28 IE: .86 SRI: 27



Terra Cotta
SR: .34 IE: .87 SRI: 36



Banner Red
SR: .42 IE: .84 SRI: 45



Colonial Red
SR: .34 IE: .86 SRI: 35



Brandywine
SR: .26 IE: .85 SRI: 24



Dove Grey
SR: .49 IE: .87 SRI: 56



Slate Gray[△]
SR: .37 IE: .86 SRI: 39



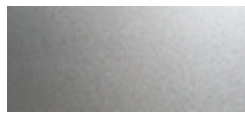
Charcoal
SR: .32 IE: .85 SRI: 32



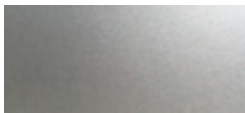
Matte Black
SR: .27 IE: .86 SRI: 26

Mica Colors**

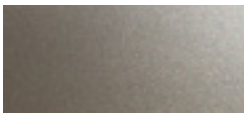
PVDF - 70% polyvinylidene flouride resin paint system



Bright Silver[△]S66
SR: .60 IE: .77 SRI: 68



Silversmith[△]S15
SR: .53 IE: .78 SRI: 59



Champagne S20
SR: .37 IE: .83 SRI: 38



Pewter S11
SR: .36 IE: .85 SRI: 38



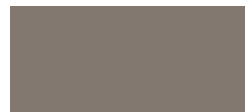
Bright Copper[△]S25
SR: .49 IE: .85 SRI: 55

26 Gauge Low Gloss

PVDF - 70% polyvinylidene flouride resin paint system



Sierra Tan
SR: .46 IE: .87 SRI: 52



Slate Gray
SR: .37 IE: .86 SRI: 39



Medium Bronze
SR: .30 IE: .86 SRI: 30



Dark Bronze
SR: .28 IE: .86 SRI: 27



Colonial Red
SR: .31 IE: .86 SRI: 31



Classic Green
SR: .31 IE: .87 SRI: 32



Hartford Green
SR: .08 IE: .89 SRI: 3



Slate Blue
SR: .30 IE: .87 SRI: 31

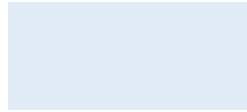


Matte Black
SR: .26 IE: .86 SRI: 25

Acrylic Coated Galvalume also available (not pictured)

Enduracote® Colors

Siliconized Modified Polyester (SMP) paint system



Brite White 824
SR: .60 IE: .85 SRI: 71



White 899
SR: .54 IE: .89 SRI: 64



Ivory 883
SR: .62 IE: .89 SRI: 75



Light Stone 887
SR: .51 IE: .90 SRI: 60



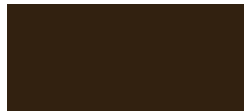
Tan 855
SR: .38 IE: .90 SRI: 42



Hickory Moss 870
SR: .36 IE: .89 SRI: 39



Cocoa Brown 856
SR: .35 IE: .85 SRI: 36



Dark Brown 859
SR: .30 IE: .86 SRI: 30



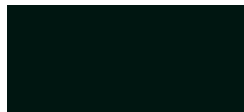
Antique Bronze 854
SR: .29 IE: .83 SRI: 27



Patina Green 893
SR: .38 IE: .90 SRI: 42



Evergreen 875
SR: .27 IE: .86 SRI: 26



Hartford Green 821
SR: .29 IE: .85 SRI: 28



Caribbean Blue 881
SR: .27 IE: .90 SRI: 28



Gallery Blue 826
SR: .29 IE: .86 SRI: 29



Brick Red 898
SR: .31 IE: .90 SRI: 33



Brite Red 845
SR: .32 IE: .86 SRI: 33



Classic Burgundy 853
SR: .26 IE: .86 SRI: 25



Ash Gray 848
SR: .38 IE: .87 SRI: 39



Light Gray 889
SR: .31 IE: .87 SRI: 32



Charcoal Gray 851
SR: .35 IE: .86 SRI: 37



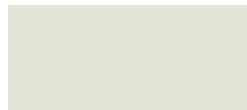
True Black 882
SR: .30 IE: .85 SRI: 30



Copper Penny 939 **
SR: .48 IE: .83 SRI: 53

Polydure® Colors

Polyester paint system



White 169



Tan 192



Light Stone 181



Ash Gray 153



Hickory Moss 179



Cocoa Brown 172



Brick Red 187



Charcoal 157



Evergreen 176

valspar® PVDF

- 30-year limited paint warranty for film integrity
- 30-year limited paint warranty for fade & chalk
- Consult Fabral for finish warranty detail on Mica Colors
- Consult Fabral for substrate warranty on aluminum and Galvalume

Note: Due to Mica colors, including copper penny, being a metallic finish, the 30-year warranty for fading does not apply as outlined in the PVDF warranty sheet.

ENDURACOTE®

PREMIUM DEFENSE
Against the Elements

- Lifetime film integrity warranty for walls & roofs
- 30-year warranty against fade & chalk for walls & roofs
- 10-year edge rust warranty against acid rain (galvanized only)

Polydure Warranty

- 10-year limited paint warranty for film integrity
- 3-year limited sidewall panel paint warranty for fade and chalk (5-year limited warranty for white)

SR = Solar Reflectivity IE = Initial Emissivity SRI = Solar Reflective Index

Crinkle Coat

SMP paint system



Charcoal
SR: .33 IE: .88 SRI: 35



Burnished Slate
SR: .31 IE: .87 SRI: 32



Evergreen
SR: .33 IE: .86 SRI: 37

The unique texture redirects light for enhanced visual depth, promising a step-change improvement over flat-panels' appearance. The coating has been responsively designed, so its subtle shading mirrors the eye's natural horizontal motion.

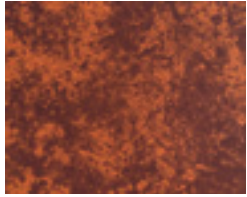
Available in our Grand Rib 3 Plus Profile

COR-TEN AZP®

PVDF paint system



COR-TEN AZP® Raw
SR: .32 IE: .89 SRI: 34



COR-TEN AZP® Robust
SR: .32 IE: .85 SRI: 32

With age comes a classic beauty, and now that look is available for your next roofing or cladding project. Our unique, Weathered Metal Series™, you now have a choice of two additional, distinct stages of aging — moderately weathered Raw and more heavily weathered Robust — to accompany the fully weathered appearance of COR-TEN AZP® steel. Each pattern is carefully crafted to give your next roofing or wall cladding project the authentic look of timelessness.

EuraZinc Pro



EuraZinc Pro
SR: .20 IE: .69 SRI: 14

EuraZinc is a unique self-weathering zinc coating on aluminum. Real zinc-particles in the topcoat allow the surface to weather over time from an initial light grey finish to a dark and natural weathered zinc finish.

Custom Colors



Can't find your color? Fabral can tackle the most challenging custom color orders, expertly matching your samples for limitless possibilities.

To learn more contact:

FabralCore™ at
800.884.4484 or
Fabral.com.

** Featuring a pearlescent mica finish; subject to premium pricing.

Colors shown are as close to actual colors as allowed by the printing process. Actual metal samples are available. Colors may appear different when viewed at different angles and under different lighting conditions. Due to product improvements, changes and other factors, we reserve the right to change or delete information herein without prior notice.

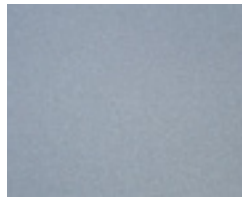


*All Standard Stocked colors are ENERGY STAR® approved except Hartford Green & Extra Dark Bronze

□ LEED® compliant for low slope and steep slope

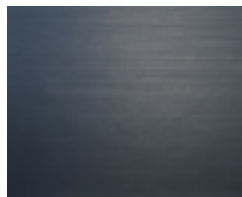
△ LEED® compliant for steep slope only

Non-Stocked Specialty



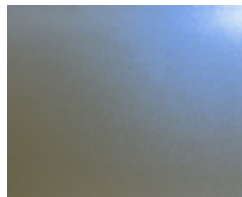
Anomax® Silver Bronze

A new and anodized finish: The combination of the anodizing look and the benefits of pre-coated aluminum allows new architectural possibilities.



Alunatur® Titanium Brushed

Natural looking finishes: Consisting of a wide range of (semi-) transparent clearcoats which are available in different coating qualities. On top of the choices in colors you can also choose between special transparent coatings and brushed material substrate.



Mica Onyx White Blue

Colors that change with lighting: Based on multi-layer PVDF coating systems which contain mica effect pigments. This unique combination causes a fascinating color variation that changes depending upon viewing angle and lighting.

Fabral provides numerous options through its specialty color program. Natural metals; brushed or anodized aluminum and a host of vibrant colors offer unbridled options for unique design.

View our complete color and finish options at **Fabral.com**

ARCHITECTURAL PVDF				STEEL				ALUMINUM			
FABRAL COLOR	SR	IE	SRI	26GA.†	24GA.†	22GA.‡	18GA.‡	.032"††	.040"††	.050"††	.063"††
Regal White	.68	.86	82		●■▲◆	●	●	●■			●
Bone White	.72	.84	87		●	●	●	●	●	●	
Almond	.63	.86	75		●			●	●	●	
Sandstone	.54	.86	63		●■▲◆	●		●	●	●	
Surrey Beige	.40	.86	43		◆	●		●	●	●	
Sierra Tan	.35	.86	37	LG	●			●	●	●	
Medium Bronze	.30	.87	31	LG	●■◆	●	●	●	●	●	●
Mansard Brown	.29	.86	29		●			●	●	●	
Dark Bronze	.26	.84	24	LG	●■▲◆	●	●	●■	●	●	●
Extra Dark Bronze	.05	.89	n/a		●			●		●	
Patina Green	.29	.87	29		●			●			
Hemlock Green	.28	.87	28		●						
Classic Green	.26	.84	24	LG	●■	●		●	●		
Hartford Green	.10	.82	2	LG	●			●		●	
Teal	.28	.87	28		●						
Regal Blue	.28	.86	27		●			●			
Slate Blue	.26	.85	24	LG	●			●			
Terra Cotta	.34	.87	36		●						
Banner Red	.42	.84	45		●			●			
Colonial Red	.34	.86	35	LG	●			●			
Brandywine	.26	.85	24		●			●			
Dove Grey	.49	.87	56		●			●■		●	
Slate Gray	.37	.86	39	LG	◆			●	●		
Charcoal	.32	.85	32		●	●		●	●	●	
Matte Black	.27	.86	26	LG	●	●		●	●	●	
Bright Silver	.60	.77	68		●			●■		●	
Silversmith	.53	.78	59		●			●			
Champagne	.37	.83	38		●			●			
Pewter	.36	.85	38		●			●			
Bright Copper	.49	.85	55	●	●■			●■			

PAINT PERFORMANCE PROPERTIES	HOT DIPPED GALVANIZED STEEL OR GALVALUME®	ALUMINUM
Accelerated Weathering ASTM D 4587 (Drew Cycle Weatherometer) ASTM G 23	Hours: 3,000 Total Chalk: Rating 8 Color: 5 Δ E Hunter units max Hours: 5,000 Total Chalk: Rating 8 Color: 5 Δ E Hunter units max	Hours: 3,000 Total Chalk: Rating 8 Color: 5 Δ E Hunter units max Hours: 5,000 Total Chalk: Rating 8 Color: 5 Δ E Hunter units max
Salt Spray ASTM B 117	Hours: 1,000 Total Scribe: Rating 7 1/16" (1.6mm) Field: Rating 10, no blisters	Hours: 3,000 Total Scribe: Rating 10, no creepage Field: Rating 10, no blisters
Humidity ASTM D 2247	Hours: 2,000 Total Rating: 10, no blisters	Hours: 3,000 Total Rating: 10, no blisters
Formability ASTM D 4145	0T-3T	0T-3T
ASTM D 522 (Elongation over 1/8" mandrel)	No cracking No loss of adhesion	No cracking No loss of adhesion
Pencil Hardness ASTM D 3363	HB-2H	HB-2H
Abrasion Resistance ASTM D 968	55-75 Liters of falling sand	55-75 Liters of falling sand
Specular Gloss ASTM D 523	20-35 at 60°	20-35 at 60°
Reverse Impact ASTM D 2794	2 x Metal thickness in inch-lbs. No loss of adhesion	1 1/2 x Metal thickness in inch-lbs. No loss of adhesion
Flame Test ASTM E 84	Class A rated coating	Class A rated coating

† Standard Coil Width is 48.25"

‡ Standard Coil Width is 44.375"

● Available in Standard Coil Width.

■ Available in 40.25" Coil Width.

▲ Available in 38" Coil Width.

◆ Available in 44.375" Coil Width.

LG Refer to website for reflective ratings

NOTES ON AVAILABILITY:

1. 26ga, 24ga, .032", .040", .050" & .063" are standard 48.25" in width, 22ga & 18ga are 44.375" in width for painted items.

2. Standard inventory is non-embossed. Please contact us for the availability of stucco embossing.

3. Protective strippable film is available upon request.

4. Mica colors are subject to premium pricing. Due to the unique effect of the Mica finishes, appearances may vary from batch to batch.

5. Subject to change without notice.

6. Unpainted, acrylic coated, Aluminum-Zinc Alloy steel (AZ-55) is maintained in: 26ga x 20", 26ga x 28", 26ga x 48.25", 24ga x 20", 24ga x 24", 24ga x 28", 24ga x 48.25", 22ga x 44.375", 22ga x 48.25", 20ga x 44.375" and 18ga x 44.375".

7. All colors are supplied in Medium Gloss (20-35 at 60°). Low Gloss available subject to minimum coating run.

Fabral® standard architectural colors and finishes feature 70% polyvinylidene fluoride (PVDF) resin paint systems to ensure long term color retention and performance. Custom colors and finishes are also available. Minimum quantities and set up charges may apply.

ENDURACOTE® - SMP

† Standard Coil Width is 40.875" ‡ Standard Coil Width is 48.25"

Color	#	SR	IE	SRI	29GA.†	26GA.‡	24GA.‡
Brite White	824	.60	.85	71	•	•	
White	899	.54	.89	64	•	•	•
Ivory	883	.62	.89	75	•	•	
Light Stone	887	.51	.90	60	•	•	
Tan	855	.38	.90	42	•	•	
Hickory Moss	870	.36	.89	39	•	•	•
Cocoa Brown	856	.35	.85	36	•	•	
Dark Brown	859	.30	.86	30	•		
Antique Bronze	854	.29	.83	27	•	•	•
Patina Green	893	.38	.90	42	•		
Evergreen	875	.27	.86	26	•	•	•
Hartford Green	821	.29	.85	28		•	
Caribbean Blue	881	.27	.90	28		•	•
Gallery Blue	826	.29	.86	29		•	
Brick Red	898	.31	.90	33	•	•	•
Brite Red	845	.32	.86	33		•	
Classic Burgundy	853	.26	.86	25	•		
Ash Gray	848	.38	.87	39		•	
Light Gray	889	.31	.87	32	•	•	
Charcoal Gray	851	.35	.86	37	•	•	•
True Black	882	.30	.85	30	•		
Copper Penny	525	.48	.83	53		•	•

POLYDURE® - POLYESTER

Standard Coil Width is 41.5625"

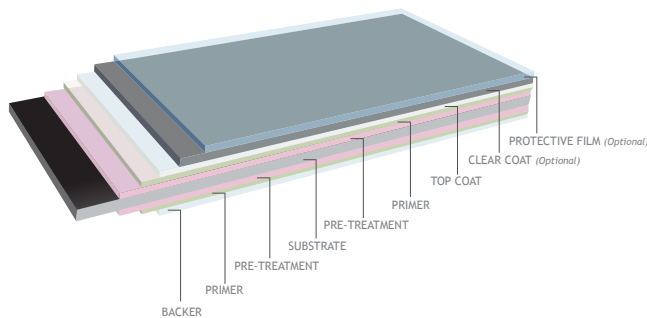
White	169	—	—	—		•	
Tan	192	—	—	—		•	
Light Stone	181	—	—	—		•	
Ash Gray	153	—	—	—		•	
Hickory Moss	179	—	—	—		•	
Cocoa Brown	172	—	—	—		•	
Brick Red	187	—	—	—		•	
Charcoal	157	—	—	—		•	
Evergreen	176	—	—	—		•	

SPECIALTY FINISHES

† Standard Coil Width is 48.189" ◇ Standard Coil Width is 40.875" ‡ Standard Coil Width is 48.25"

Color	#	SR	IE	SRI	.040" Alum.†	29GA.◇	24GA.‡
Crinkle Coat Charcoal	—	.33	.88	35		•	
Crinkle Coat Burnished Slate	—	.31	.87	32		•	
Crinkle Coat Evergreen	—	.33	.86	37		•	
COR-TEN AZP Raw	—	.32	.89	34			•
COR-TEN AZP Robust	—	.32	.85	32			•
EuraZinc Pro	—	.20	.69	14	•		

ARCHITECTURAL PVDF PAINT SYSTEM



ENDURACOTE® SMP PAINT SYSTEM

